

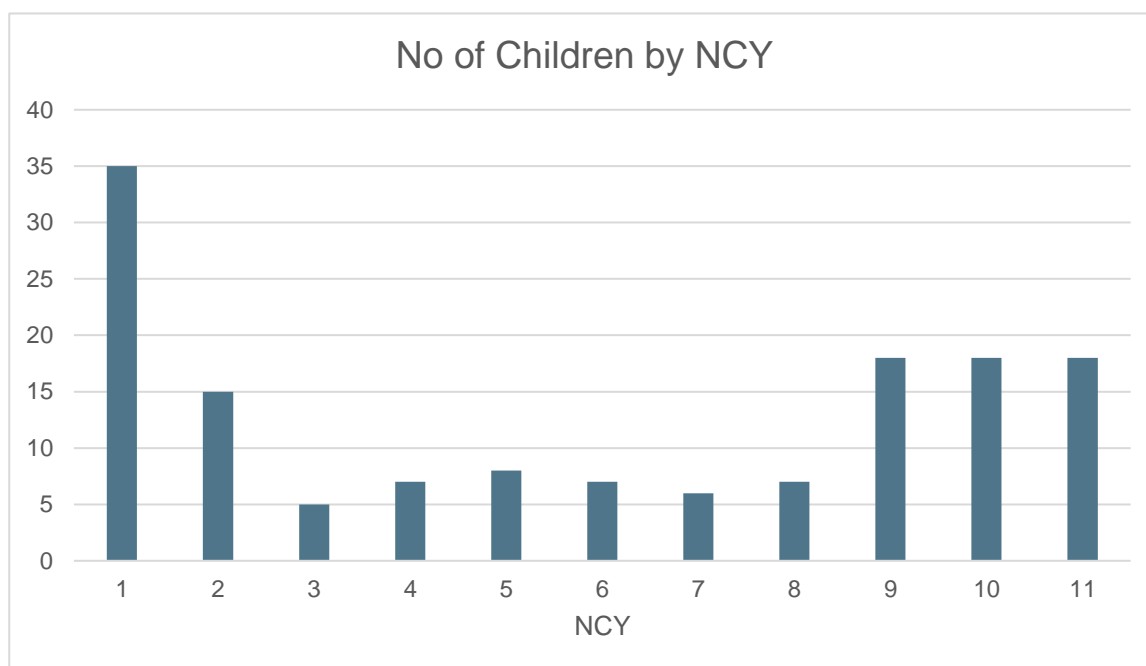
<b>BRIEFING</b>	<b>TO:</b>	Schools' Forum
	<b>DATE:</b>	12 <sup>th</sup> September 2025
	<b>LEAD OFFICER:</b>	Kelly Robinson Strategic Lead for Inclusion and Alternative Provision
	<b>TITLE:</b>	Part Time Timetables Academic Year 2024-2025
<b>1. Background</b>		
1.1	<p><a href="#"><u>Working together to improve school attendance (applies from 19 August 2024)</u></a> sets out the statutory basis for the use of Part Time timetables.</p> <p>The law entitles every child of compulsory school age to an efficient, full-time education suitable to their age, aptitude, and any special educational need they may have.</p>	
1.2	<p>For the most vulnerable pupils, regular attendance is also an important protective factor and the best opportunity for needs to be identified and support provided. In very exceptional circumstances, where it is in a pupil's best interests, there may be a need for a temporary part-time timetable.</p> <p>A Part time timetable could be considered to support a medical condition which prevents a pupil from attending school full time and is used to help the pupil access as much education as possible.</p>	
1.3	<p>Reporting to the Local Authority the use of part time timetables enables analysis which support best practice to be shared and any areas of further support to be identified and addressed in partnership across the school and Local Authority systems. This data is requested from the Local Authority during both SEND and Children's Services Inspections and to support this duty all schools are requested to report any use of a Part Time timetable for individual students.</p>	
1.4	<p>To the end of the academic year 2024-25, schools shared 144 reports for pupils supported by part time timetables.</p>	
1.5	<p>Part time timetables are reported through Trade Rotherham and reviewed by the Strategic Lead Inclusion and Alternative Provision. Support and guidance is offered where progress is not being made to ensure that children are not being reintegrated to full time education.</p>	

## 2. Key Issues

**2.1** From school reported data 2024 – 2025, the vast majority of part time timetable are put in place to support Emotionally Based School Avoidance (100% instances across all year groups Years 3 – 11)  
In Year 1, 42% timetables are designed to support integration to school.  
In Year 2, 60% medical support, 30% support EBSA, 10% integration to school

**2.2** From school reported data 2024 – 2025, 53% of part time timetables are agreed in order to support pupils in primary schools and 47% agreed for secondary aged pupils.  
35% pupils with part time timetables are in KS1  
19% pupils are in KS2  
22% pupils are in KS3  
25% pupils with part time timetables are in KS4

**2.3** This breaks down as follows by year group:



**2.4** In 2024 – 2025 57% pupils with part time timetables in place are male.

**2.5** From reported data 2024 – 2025, 45% pupils with a part time timetable are also supported by an EHCP.

**2.6** Across all part time timetables, the most common number of hours a pupil attends school is 16 hours, at each Key Stage the average hours are as follows;

KS1 – 19.88 hours

KS2 – 14.31 hours

KS3 – 12.75 hours

KS4 – 16.5 hours

**2.7** For reported part time timetables 2024-2025, the duration of part time timetables was as follows;

Up to half a term – 16%

Between half a term and one term – 30%

Between one and two terms – 26%

Between two and three terms – 22%

Beyond three terms – 6%

3. Key Actions and Timelines	
3.1	<p>September 2024 – Part time timetable online reporting launched at Trade Rotherham</p> <p>September 2025- Reminder to all settings of online reporting pathway for part time timetable reporting</p> <p>2025 - 2026 – Best practice part time timetable use and models of reintegration sharing through; Primary Inclusion Panel, Locality Partnership Panels, Specialist Inclusion Team support meetings with individual schools, Attendance meetings with individual schools and monthly focus at inclusion events.</p>
4. Recommendations	
4.1	<p>That Schools Forum note the content of the briefing and consider any additional actions required.</p>